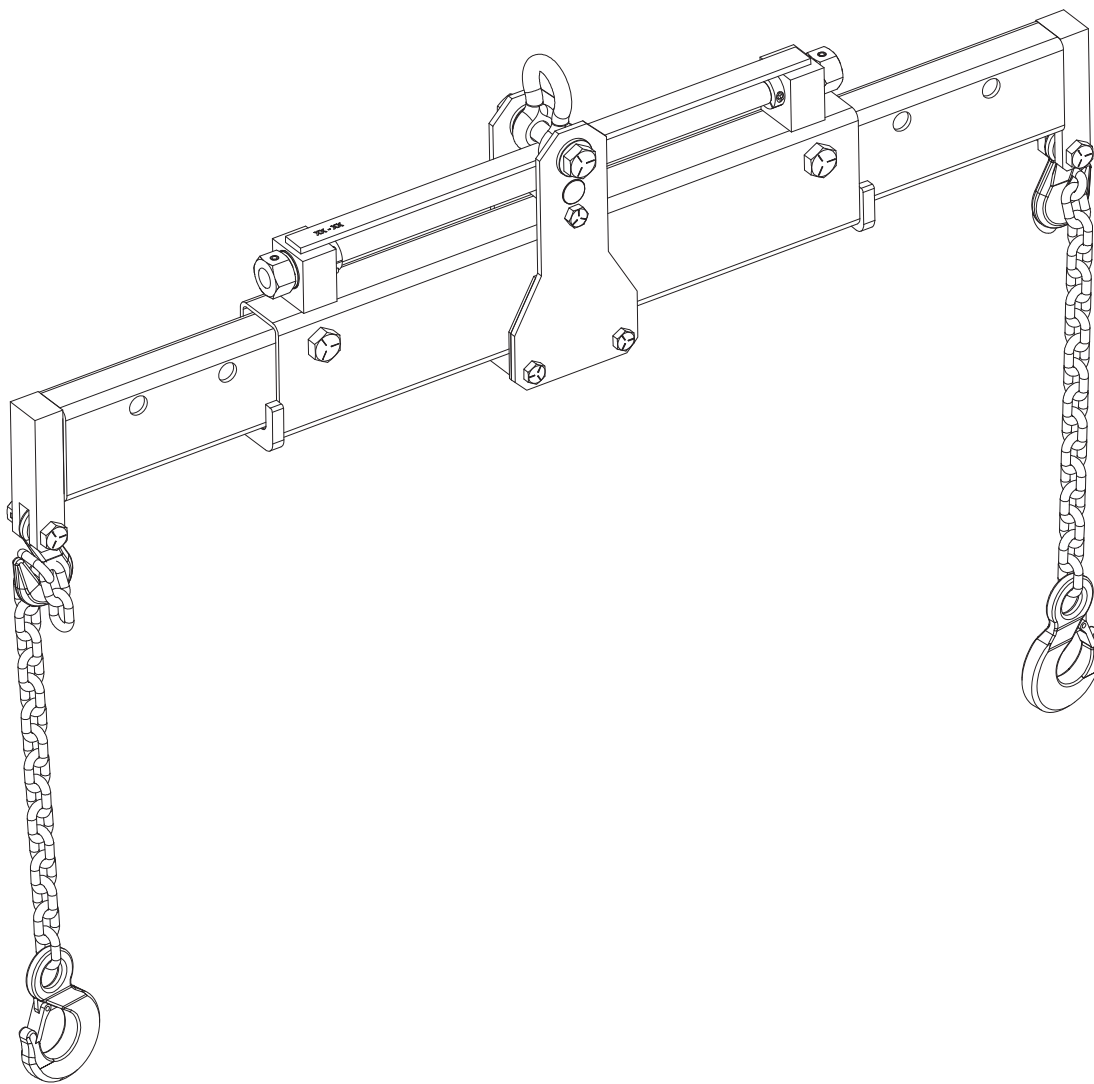


HEIN-WERNER AUTOMOTIVE®

HW93805 3-Ton Load Leveler



**READ THIS MANUAL CAREFULLY
AND RETAIN FOR YOUR RECORDS**

Table of Contents

Signal Words	3
Receiving Inspection.....	3
Owner / Operator Responsibilities	3
Component Identification	4
Safety Instructions	5
Operating Instructions	6
Maintenance	7
Parts List	8
Warranty	12

Signal Words

Signal words call attention to a safety message or messages, or a property damage message or messages, and designates a degree or level of hazard seriousness. The signal words are “**DANGER**”, “**WARNING**”, “**CAUTION**”, and “**NOTICE**”.

- **DANGER:** Indicates a hazardous situation, which, if not avoided, will result in death or serious injury. This signal word is to be limited to the most extreme situations.
- **WARNING:** Indicates a hazardous situation, which, if not avoided, could result in death or serious injury.
- **CAUTION:** Indicates a hazardous situation, which, if not avoided, could result in minor or moderate injury. It may be used to alert against unsafe practices.
- **NOTICE:** Indicates a property damage message.

Receiving Inspection

Before attempting to operate this load leveler, thoroughly read and understand this manual. Completely remove all tape and packaging. Inspect the load leveler immediately upon delivery. If shipping damage is evident, inform the delivering carrier immediately and contact customer service at the numbers and address printed on the back cover of this manual.

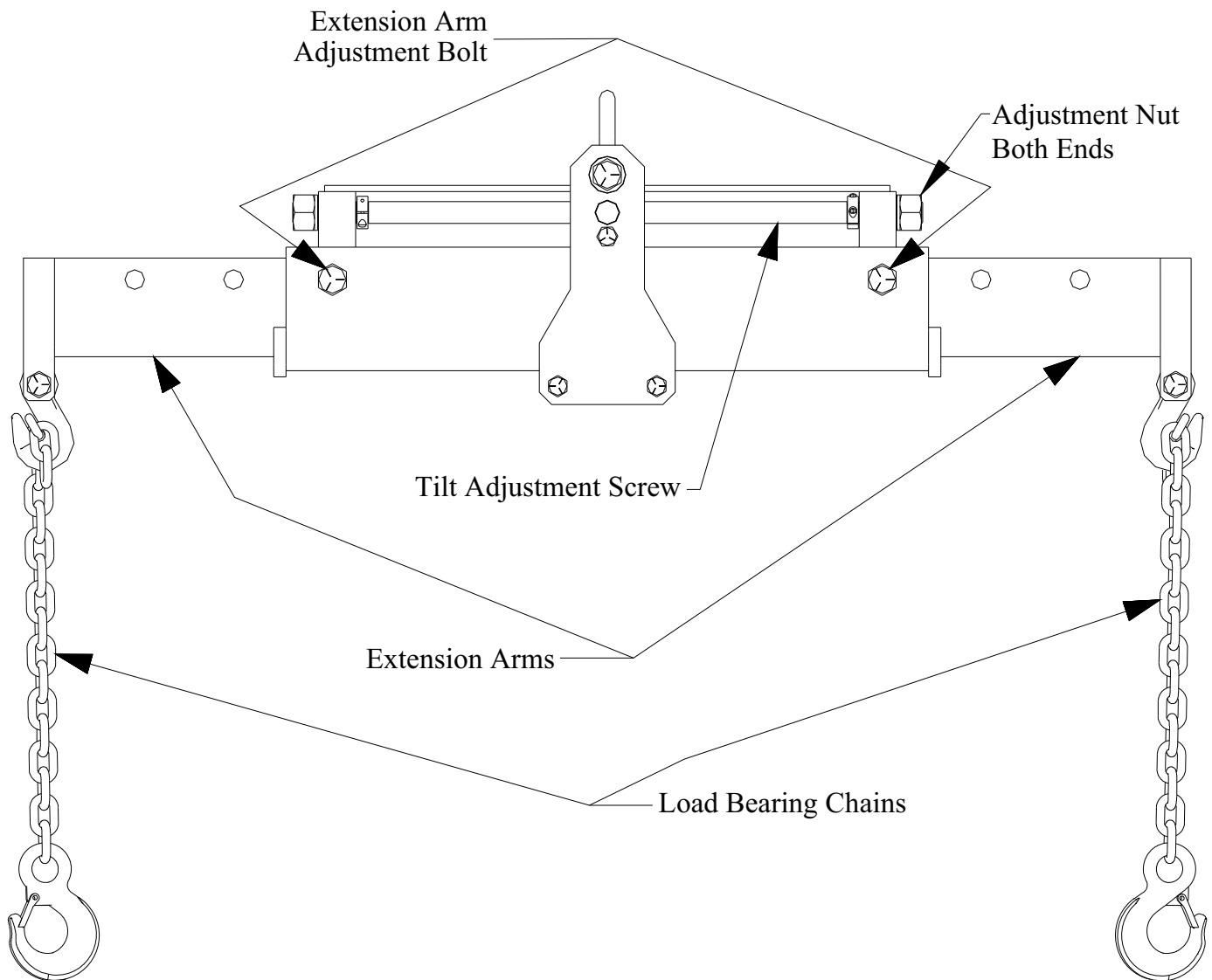
Owner and / or Operator Responsibilities

The owner / operator must have an understanding of the manufacturer’s operating instructions and warnings before using this load leveler. Personnel involved in the use and operation of equipment shall be careful, competent, trained, and qualified in the safe operation of the equipment and its proper use when servicing motor vehicles and their components. Warning information should be emphasized and understood.

The owner / manager must make this manual available to all personnel using this load leveler at your direction. They must read and understand the contents of this manual. If the operator is illiterate or is not fluent in English, the manufacturer’s instructions and warnings shall be read to and discussed with the operator in a language the operator understands by the owner / manager, making sure that the operator comprehends its contents and observes the proper procedures for use of this load leveler.

Owner / operator must study and maintain for future reference the manufacturer’s instructions. Owner / operator are responsible for keeping all warning labels and instruction manuals legible and intact. Replacement labels and literature are available from the manufacturer.

Component Identification



Safety Instructions

WARNING

To avoid serious injury or death, read this manual carefully before operating this unit. Call customer service at the numbers and address printed on the back cover of this manual if you have any questions.

Failure to understand and obey safety instructions may result in unsafe or improper use of this product.

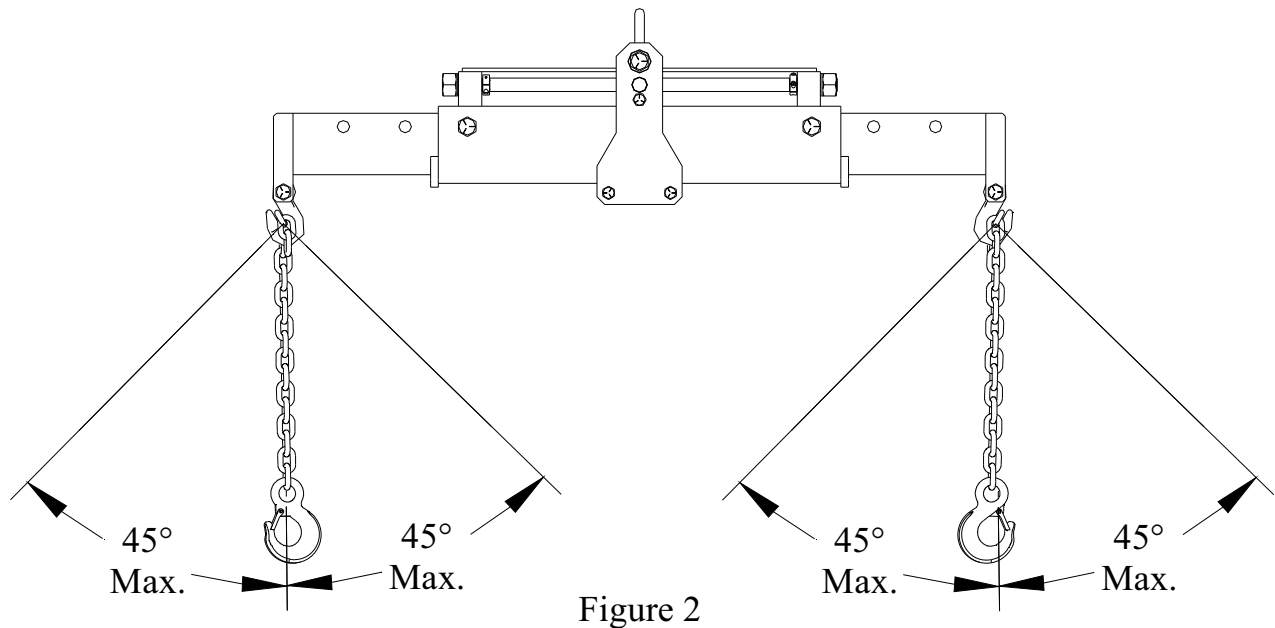
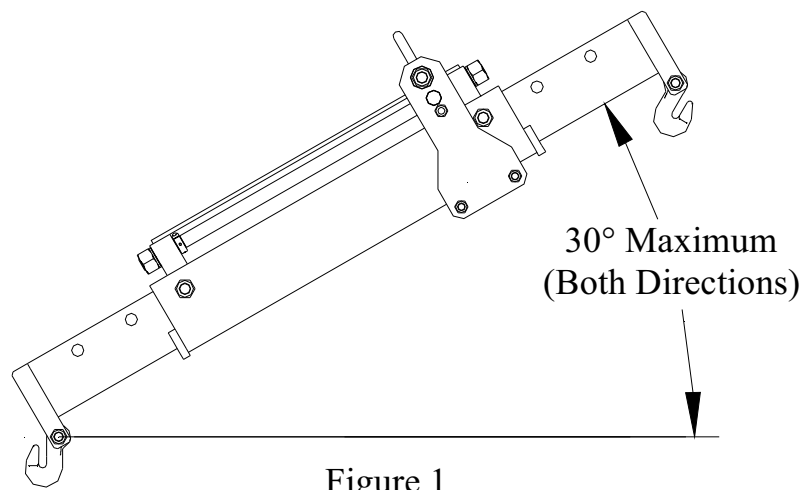
1. Wear eye protection that meets the requirements of ANSI Z87.1 and OSHA.
2. Maximum capacity is 6000 pounds. Do not exceed. Overloading can result in equipment failure.
3. Do not adjust the load leveler beyond 30°. Angles greater than 30° can stress the load bearing chains beyond their load bearing capacity. (See Figure 1)
4. Do not spread the load bearing chains beyond 90°. (See Figure 2)
5. Do not use a single chain or a single extension arm to lift a load.
6. Do not move under a lifted load. The load leveler is not designed as an overhead lifting device.
7. Never place any part of your body under a load suspended by this device. Both chain and hook assemblies must be used when lifting a load. One chain and hook assembly shall be engaged in the grab hook in each extension arm. The extension arm adjustment bolts shall be tightened and secured before lifting a load.
8. Never use chains or any other accessories that have not been provided by the manufacturer.

Failure to read, understand, and follow all of the instructions and warnings in the owner's manual and the safety instructions on the product can result in serious injury, death, and/or property damage.

Operating Instructions

The load leveler is designed to handle and position components. The horizontal tilt can be adjusted to compensate for off-center loads. It can also be used to angle a component when necessary to install it.

1. Hook the load leveler to a crane.
2. Attach the two load bearing chains to the component. Adjust the extension arms in or out to keep the chain angle at a minimum. Make sure the bolts and nuts are tight before lifting a load.
3. Do not adjust the load leveler to an angle greater than 30°.
4. Do not spread the load bearing chains more than 90° for both chains.
5. Lift the component enough to determine the center of balance. Adjust the tilt screw with a wrench to adjust the angle of the load by turning either end of the tilt screw.



Maintenance Instructions

WARNING

All inspection and maintenance procedures must be performed after the load leveler has been removed from service. Failure to heed this warning may result in personal and / or property damage.

NOTICE

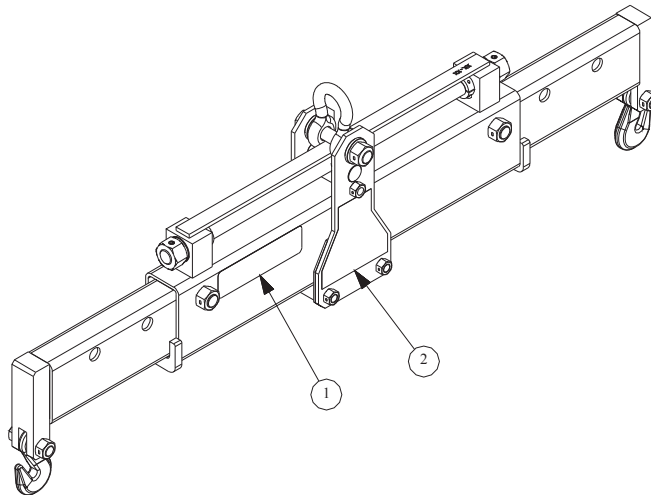
The owner must inspect, or appoint a knowledgeable person to inspect, the load leveler. Visual inspection should be made before each use of the load leveler, checking for abnormal conditions. Regular inspections should be made weekly for daily use and monthly for intermittent use. Each load leveler must be inspected immediately if subjected to an abnormal load or shock. Any load leveler which appears to be damaged in any way, is found to be badly worn, or operates abnormally shall be removed from service until necessary repairs are made.

1. Regularly clean and lubricate the adjustment screw.
2. Keep all bolts tightened after extension adjustments are made.

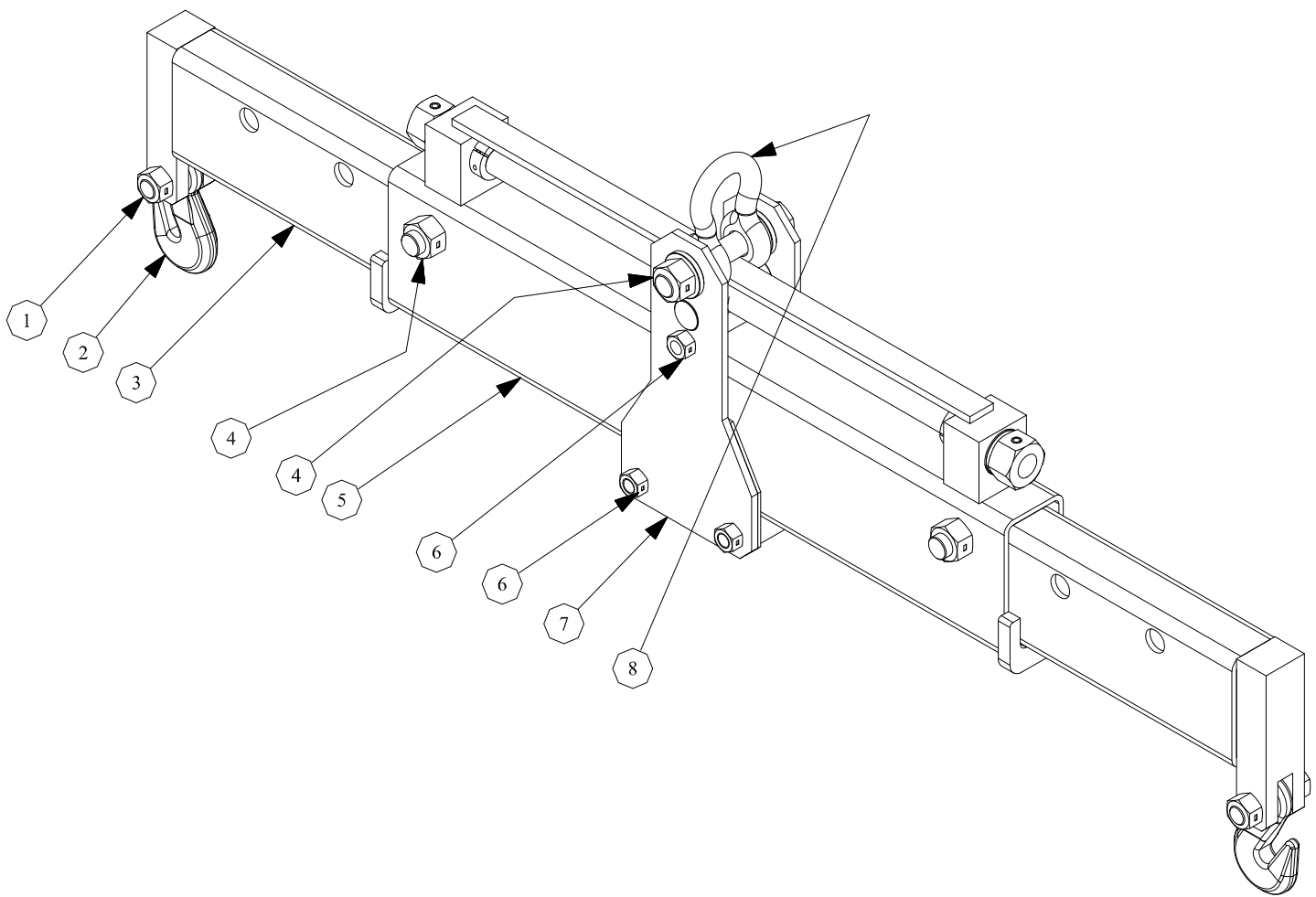
Parts List

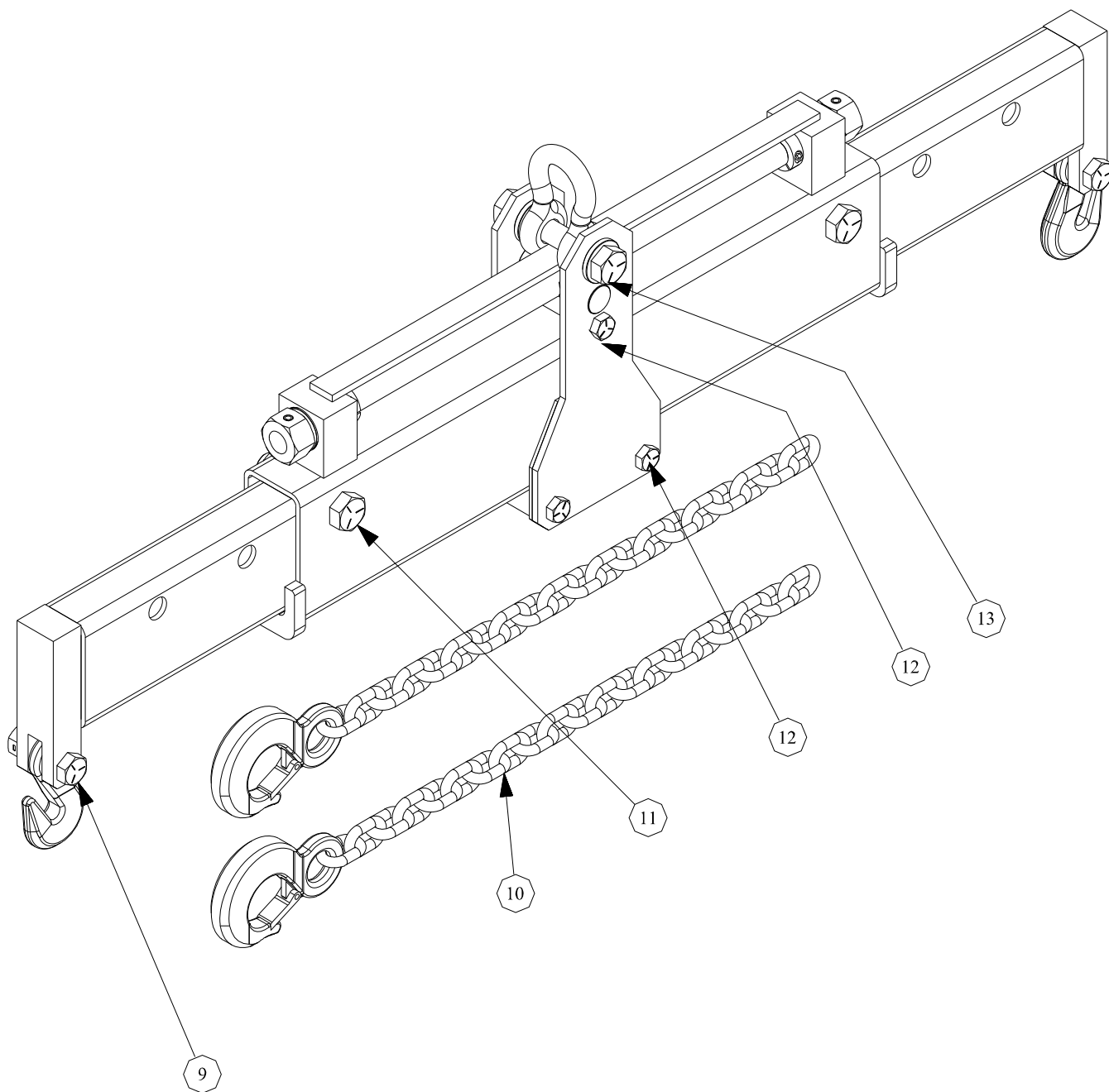
Item	Quantity	Hein-Werner Part Number	Description
1	2	928500	Nut, Hex, 5/8-11, Steel, Plated, Self Locking
2	2	928501	Hook, Grab-Eye
3	2	928502	Inner Tube Weldment
4	3	928503	Nut, Hex, 3/4-10UNC, Steel, Plated, Self Locking
5	1	928504	Main Support Tube Subassembly
6	3	928505	Nut, Hex, 1/2-13, Steel, Plated, Self Locking
7	2	928506	Side Plate Weldment
8	1	928507	Shackle
9	2	928508	Capscrew , Special, 5/8 - 11UNC, Steel, Grade 5, Plated, 2 1/4 Long "
10	2	928509	Chain w ith Safety Hook
11	2	928510	Capscrew , Special, 3/4- 10UNC, Steel, Plated, Grade 5, 3.500 Long '
12	3	928511	Capscrew , Special, 1/2- 13 UNC, Steel, Grade 5, Plated, 3 3/4 Long '
13	1	928512	Capscrew , Special, 3/4- 10UNC, Steel, Plated, Grade 5, 4.500 Long '
14	3	928513	Bearing, Cylindrical, .735 O.D. X .515 I.D. X 2.810 Long "
15	2	928514	Linear Bearing
16	2	928515	Roller
17	1	928516	Main Support Tube Weldment
18	1	928517	Screw , 7/8 - 6 ACME - 2G, Steel
19	1	928518	Block, Screw
20	2	928519	Nut, Hex, Steel, 7/8 - 6 ACME 2G
21	2	928520	Roll Pin, 5/16 Dia., 1 3/8 Long "
22	4	928521	Thrust Washer
23	2	928522	Bearing, Thrust Needle Roller, 7/8 I.D X 1 7/16 O.D.
24	2	928523	Tw o-Piece Collar, 9/16 "

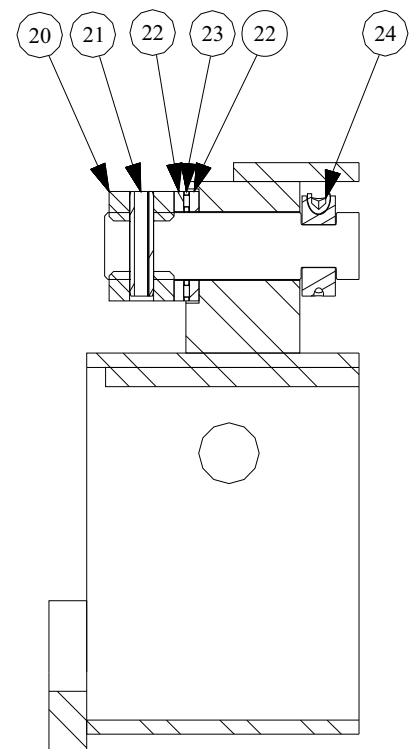
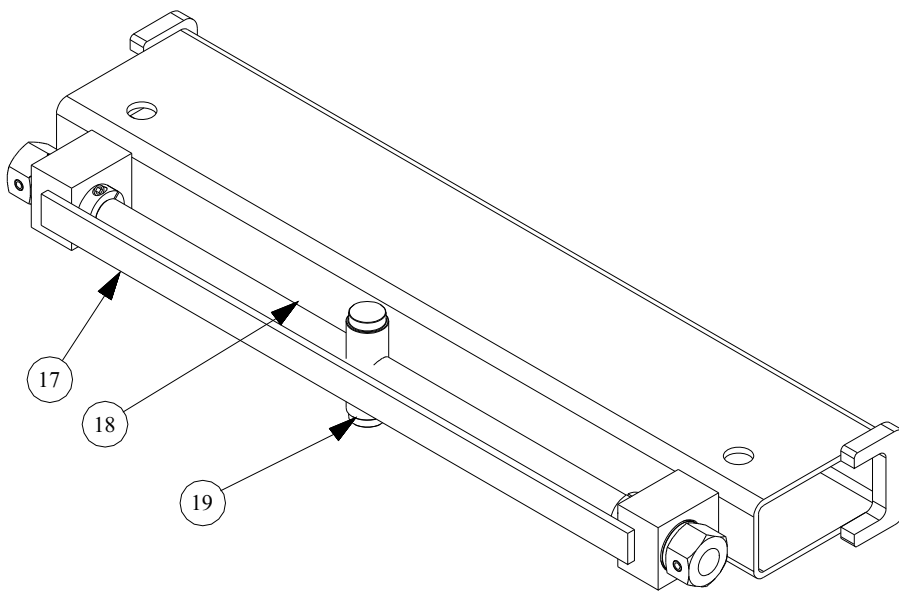
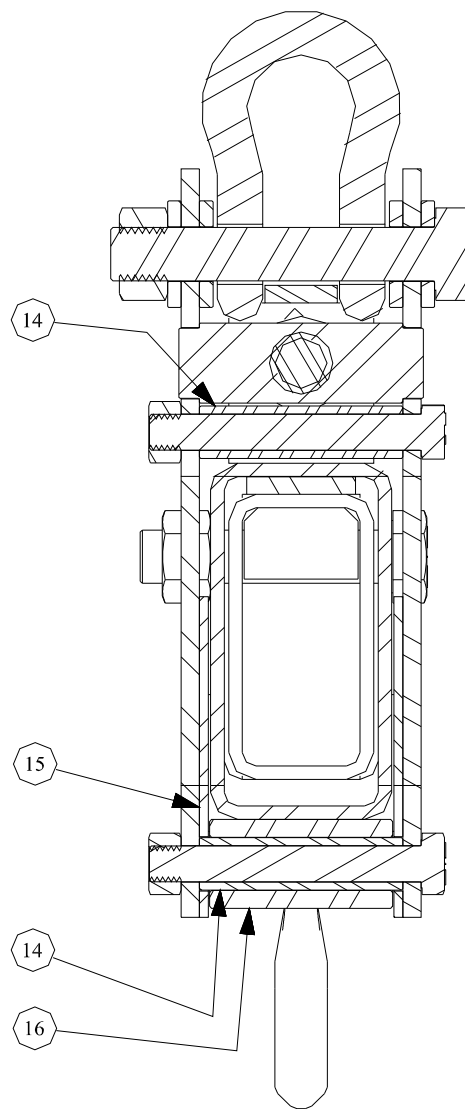
Label Parts List



Item	Qty	Part Number	Description
1	2	HW93805-L0	Identification Label
2	2	HW93805-L1	Warning Label







TWO YEARS LIMITED WARRANTY

For a period of two (2) years from date of purchase, SFA Companies will repair or replace, at its option, without charge, any of its products which fails due to a defect in material or workmanship under normal usage. This limited warranty is a consumer's exclusive remedy.

Performance of any obligation under this warranty may be obtained by returning the warranted product, freight prepaid, to SFA Companies Warranty Service Department, 10939 N. Pomona Ave., Kansas City, MO 64153.

Except where such limitations and exclusions are specifically prohibited by applicable law:

(1) THE CONSUMER'S SOLE AND EXCLUSIVE REMEDY SHALL BE THE REPAIR OR REPLACEMENT OF DEFECTIVE PRODUCTS AS DESCRIBED ABOVE

(2) SFA COMPANIES SHALL NOT BE LIABLE FOR ANY CONSEQUENTIAL OR INCIDENTAL DAMAGE OR LOSS WHATSOEVER.

(3) ANY IMPLIED WARRANTIES, INCLUDING WITHOUT LIMITATION THE IMPLIED WARRANTIES OF MERCHANTABILITY AND FITNESS FOR A PARTICULAR PURPOSE, SHALL BE LIMITED TO TWO YEARS, OTHERWISE THE REPAIR, REPLACEMENT OR REFUND AS PROVIDED UNDER THIS EXPRESS LIMITED WARRANTY IS THE EXCLUSIVE REMEDY OF THE CONSUMER, AND IS PROVIDED IN LIEU OF ALL OTHER WARRANTIES, EXPRESS OR IMPLIED.

(4) ANY MODIFICATION, ALTERATION, ABUSE, UNAUTHORIZED SERVICE OR ORNAMENTAL DESIGN VOIDS THIS WARRANTY AND IS NOT COVERED BY THIS WARRANTY.

Some states do not allow limitations on how long an implied warranty lasts, so the above limitation may not apply to you. Some states do not allow the exclusion or limitation of incidental or consequential damages, so the above limitation or exclusion may not apply to you. This warranty gives you specific legal rights, and you may also have other rights which vary from state to state.

SFA Companies, Inc.

10939 N. Pomona Avenue
Kansas City, Missouri 64153

Customer Service Hotline
888-332-6419 or 816-891-6390
Fax 816-891-6599
www.shinnfuamerica.com